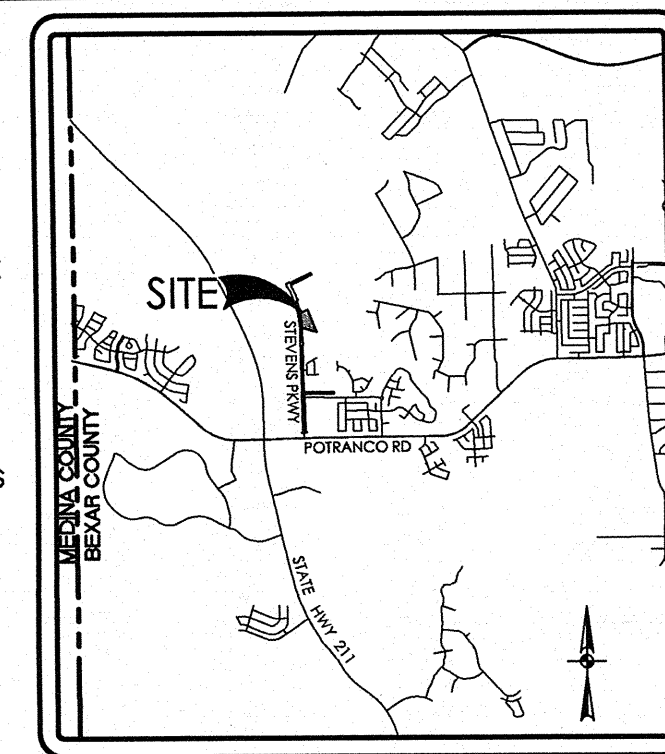


TRENCH EXCAVATION SAFETY PROTECTION

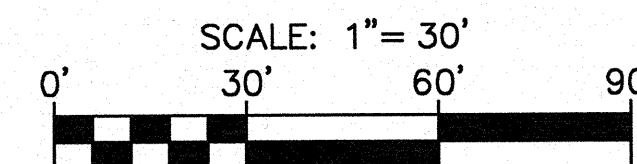
CONTRACTOR AND/OR CONTRACTOR'S INDEPENDENTLY RETAINED EMPLOYEE OR STRUCTURAL DESIGN/GEOTECHNICAL/SAFETY/EQUIPMENT CONSULTANT, IF ANY, SHALL REVIEW THESE PLANS AND ANY AVAILABLE GEOTECHNICAL INFORMATION AND THE ANTICIPATED INSTALLATION SITES WITHIN THE PROJECT WORK AREA IN ORDER TO IMPLEMENT CONTRACTOR'S TRENCH EXCAVATION SAFETY PROTECTION SYSTEMS, PROGRAMS AND/OR PROCEDURES FOR THE PROJECT DESCRIBED IN THE CONTRACT DOCUMENTS. THE CONTRACTOR'S IMPLEMENTATION OF THESE SYSTEMS, PROGRAMS AND/OR PROCEDURES SHALL PROVIDE FOR ADEQUATE TRENCH EXCAVATION SAFETY PROTECTION THAT COMPLY WITH AS A MINIMUM, OSHA STANDARDS FOR TRENCH EXCAVATIONS. SPECIFICALLY, CONTRACTOR AND/OR CONTRACTOR'S INDEPENDENTLY RETAINED EMPLOYEE OR SAFETY CONSULTANT SHALL IMPLEMENT A TRENCH SAFETY

EXISTING UTILITIES:

1. IT IS ESSENTIAL THAT 48 HOURS PRIOR TO CONSTRUCTION ALL UTILITY COMPANIES BE NOTIFIED TO LOCATE AND TAG THEIR UNDERGROUND FACILITIES PRIOR TO EXCAVATION.
2. LOCATION AND DEPTH OF EXISTING UTILITIES SHOWN HEREON ARE APPROXIMATE ONLY. ACTUAL LOCATIONS AND DEPTHS MUST BE VERIFIED BY THE CONTRACTOR PRIOR TO THE CONSTRUCTION AND THE CONTRACTOR SHALL BE RESPONSIBLE FOR THE PROTECTION OF SAME DURING CONSTRUCTION.
3. DUE TO FEDERAL REGULATIONS TITLE 49, PART 192.181, CPS MUST MAINTAIN ACCESS TO GAS VALVES AT ALL TIMES. THE CONTRACTORS MUST PROTECT AND WORK AROUND ANY GAS VALVES THAT ARE IN THE PROJECT AREA.
4. THE CONTRACTOR SHALL BE RESPONSIBLE FOR ACQUIRING ALL PERMITS, TESTS, APPROVALS AND ACCEPTANCES REQUIRED TO COMPLETE CONSTRUCTION OF THIS PROJECT.

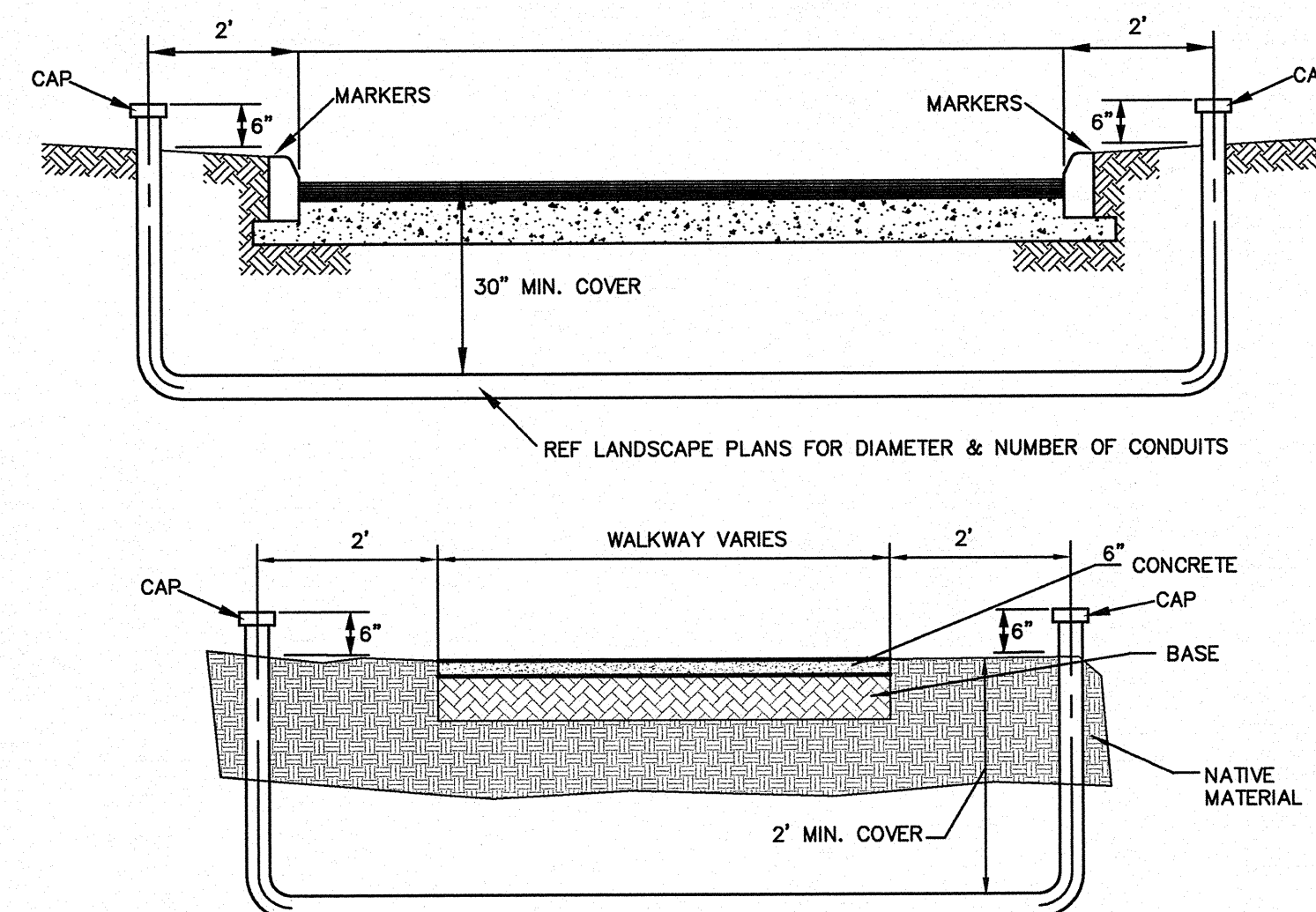


LOCATION MAP
NOT TO SCALE



LEGEND

- EXISTING WATER
- PROPOSED WATER
- EXISTING TREES TO REMAIN
- PROPERTY LINE



TYPICAL CONDUIT DETAIL

NOT-TO-SCALE

CONDUIT NOTES

1. CONTRACTOR SHALL INSTALL PERMANENT MARKERS IN PROPOSED CURB WHERE CONDUITS CROSS THE ROADWAY (BOTH SIDES).
2. ALL CONDUIT SHALL BE P.V.C. SCHEDULE 40 WITH MINIMUM BURY OF 24 INCHES.
3. ALL CONDUIT SHALL BE EXTENDED 2' BEHIND CURBS OR PROPOSED SIDEWALKS AND CAPPED FOR FUTURE USE.
4. A NYLON "PULL STRING" SHALL BE LEFT IN PLACE IN ALL CONDUITS AFTER FINAL ACCEPTANCE OF CONDUIT WORK. THE NYLON "PULL STRING" SHALL HAVE A MINIMUM TENSILE STRENGTH OF 3,000 LBS.
5. REFERENCE IRRIGATION AND LIGHTING PLANS FOR CONDUIT LOCATIONS.

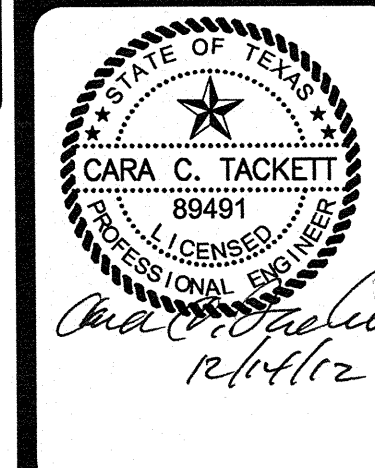
STEVENS RANCH AMENITY CENTER
SAN ANTONIO, TEXAS

OVERALL UTILITY PLAN

PLAT NO. 130057
JOB NO. 6550-17
DATE DECEMBER 2012
DESIGNER TD
CHECKED *** DRAWN EC
SHEET C6.0

PAPE-DAWSON
ENGINEERS

555 EAST RAMSEY
SAN ANTONIO, TEXAS 78216
PHONE: 210.375.9000
FAX: 210.375.9010
TEXAS BOARD OF PROFESSIONAL ENGINEERS, FIRM REGISTRATION # 470



NO.	REVISION	DATE